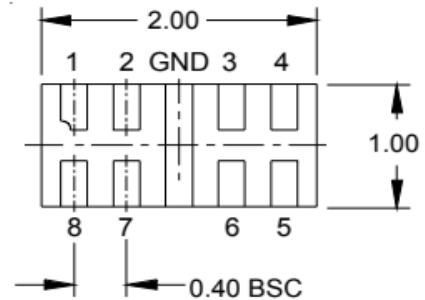


Features

- 60W (8/20 μ s) Peak Pulse Power
- Low Capacitance ESD Protection
- Flow Through DFN2010-8L Package
- RoHS Compliant
- Matte Tin Lead finish (Pb-Free)
- Protect Four High Speed Data Lines
- Meet IEC61000-4-2 Level 4:
 - Contact Discharge > 20kV
 - Air Discharge > 25kV

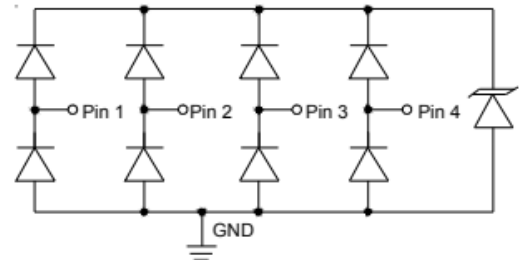
Dimensions DFN2010-8L



Applications

- PCI Express
- MDDI Ports
- eSATA Interfaces
- Display Port Interface
- Digital Visual Interface (DVI)
- High Definition Multi-Media Interface (HDMI)

Pin Configuration



Note: Pins 5-8 not internally connected

4-Line Protection

Mechanical Characteristics

- Package: DFN2010-8L
- Lead Finish: Lead Free
- UL Flammability Classification Rating 94V-0
- Quantity Per Reel: 3,000 pcs
- Reel Size: 7 inch
- Device Marking: 0544T

Absolute Maximum Ratings (Tamb=25°C unless otherwise specified)

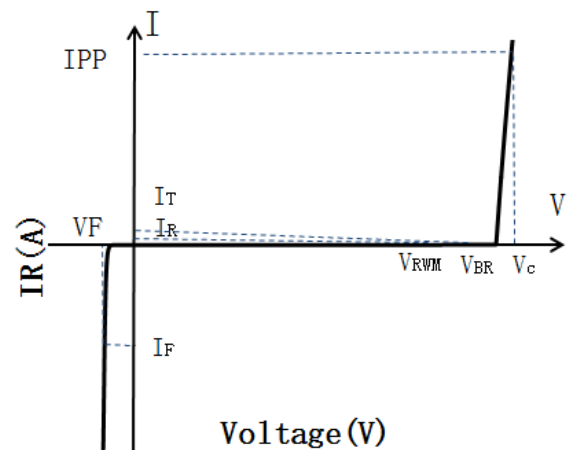
Symbol	Parameter	Value	Unit
PPK	Peak Pulse Power	60	W
IPP	Peak Pulse Current	4.5	A
VESD (Contact)	Contact ESD Voltage per IEC61000-4-2	20	kV
VESD (Air)	Air ESD Voltage per IEC61000-4-2	25	kV
TJ	Junction Temperature	-55 to +125	°C
TSTG	Storage Temperature	-55 to +150	°C

Electrical Characteristics (TA=25°C unless otherwise specified)

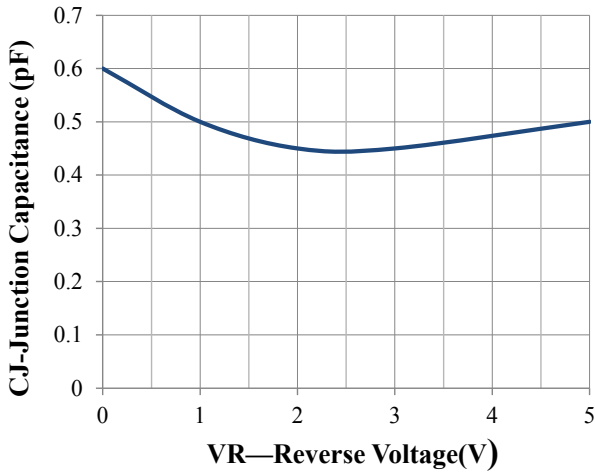
Parameter	Symbol	Test Condition	Min	Typ	Max	Unit
Reverse Working Voltage	V_{RWM}				5	V
Breakdown Voltage	V_{BR}	$I_T = 1\text{mA}$	6	8	9	V
Reverse Leakage Current	I_R	$V_{RWM} = 5\text{V}$			1	μA
Clamping Voltage	V_C	$I_{PP} = 4.5\text{A}$ (8 x 20 μs pulse)			15	V
Junction Capacitance	C_J	$V_R = 0\text{V}$, $f = 1\text{MHz}$ Between I/O pins		0.3	0.4	pF
Junction Capacitance	C_J	$V_R = 0\text{V}$, $f = 1\text{MHz}$ I/O pin to ground		0.6	0.7	pF

Portion Electronics Parameter

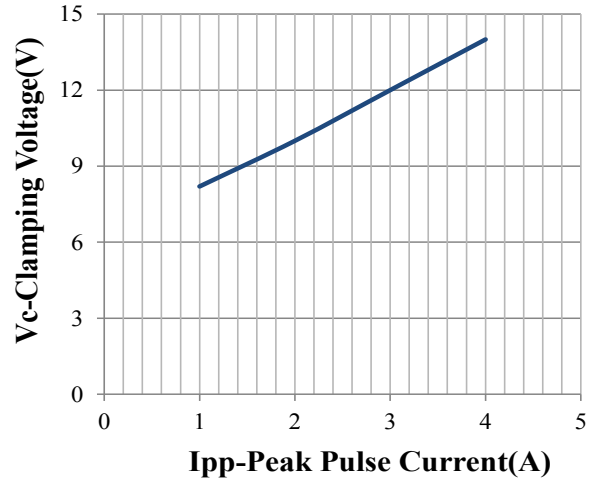
Symbol	Parameter
I_T	Test Current
I_{PP}	Maximum Reverse Peak Pulse Current
V_C	Clamping Voltage @ I_C



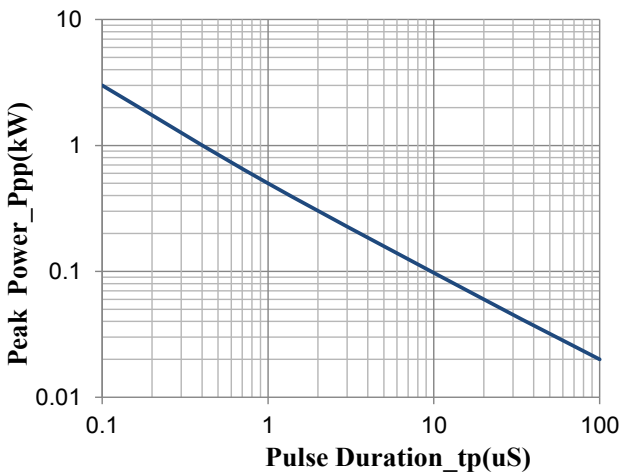
Characteristic Curves



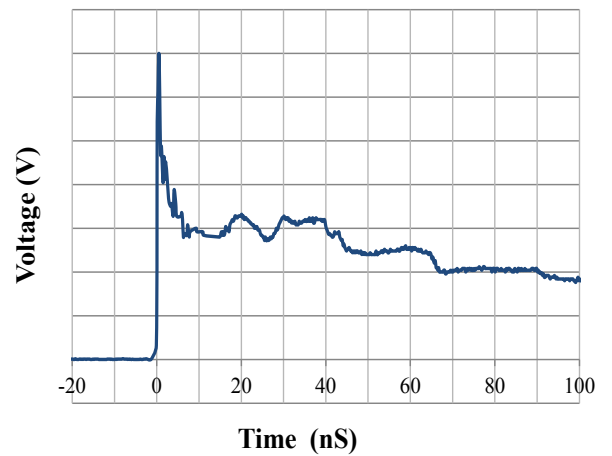
Junction Capacitance vs. Reverse Voltage



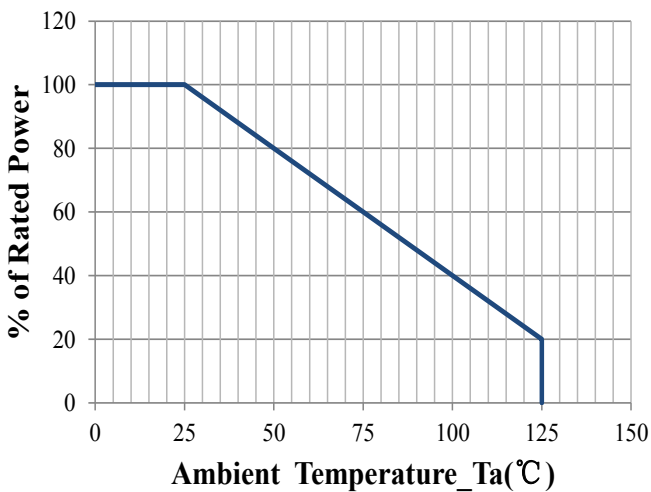
Clamping Voltage vs. Peak Pulse Current



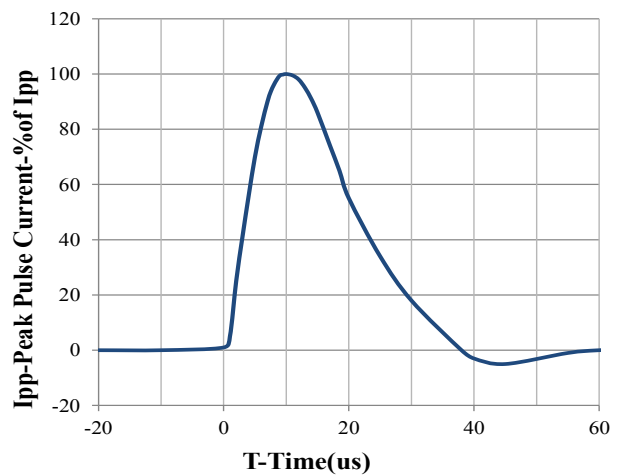
Peak Pulse Power vs. Pulse Time



IEC61000-4-2 Pulse Waveform

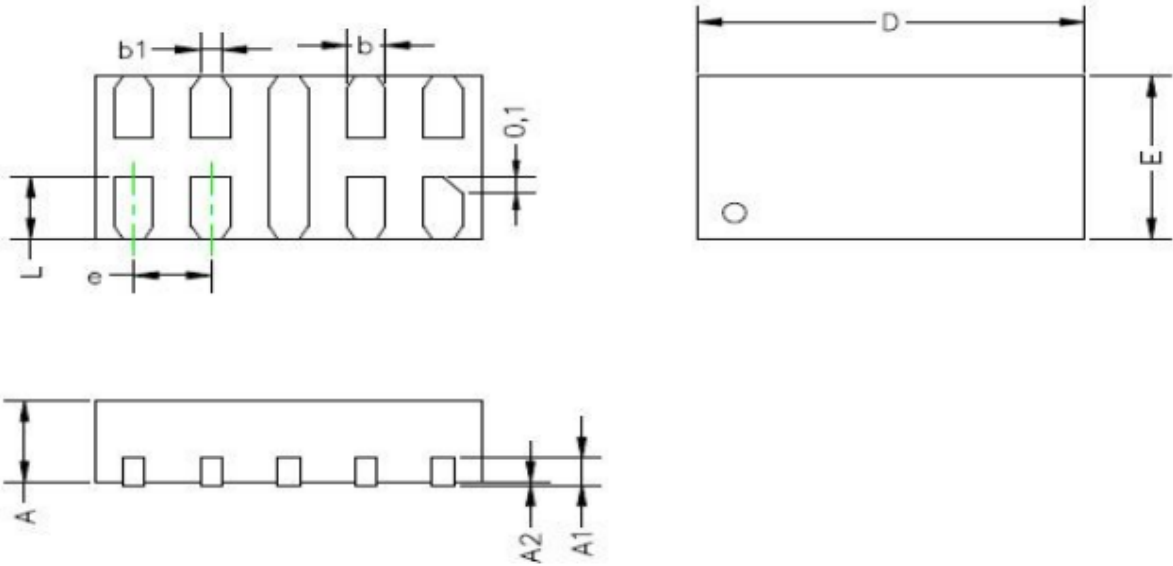


Power Derating Curve



8 X 20us Pulse Waveform

DFN2010-8L PACKAGE OUTLINE & DIMENSIONS



UNIT: mm

	MIN	NOM	MAX
D	1.95	2.00	2.05
E	0.95	1.00	1.05
b	0.15	0.20	0.25
b1	0.115REF		
L	0.33	0.38	0.43
e	0.40BSC		
A	0.45	0.50	0.55
A1	0.15REF		
A2	0.00	0.02	0.05